

# HUNNICUT ROAD

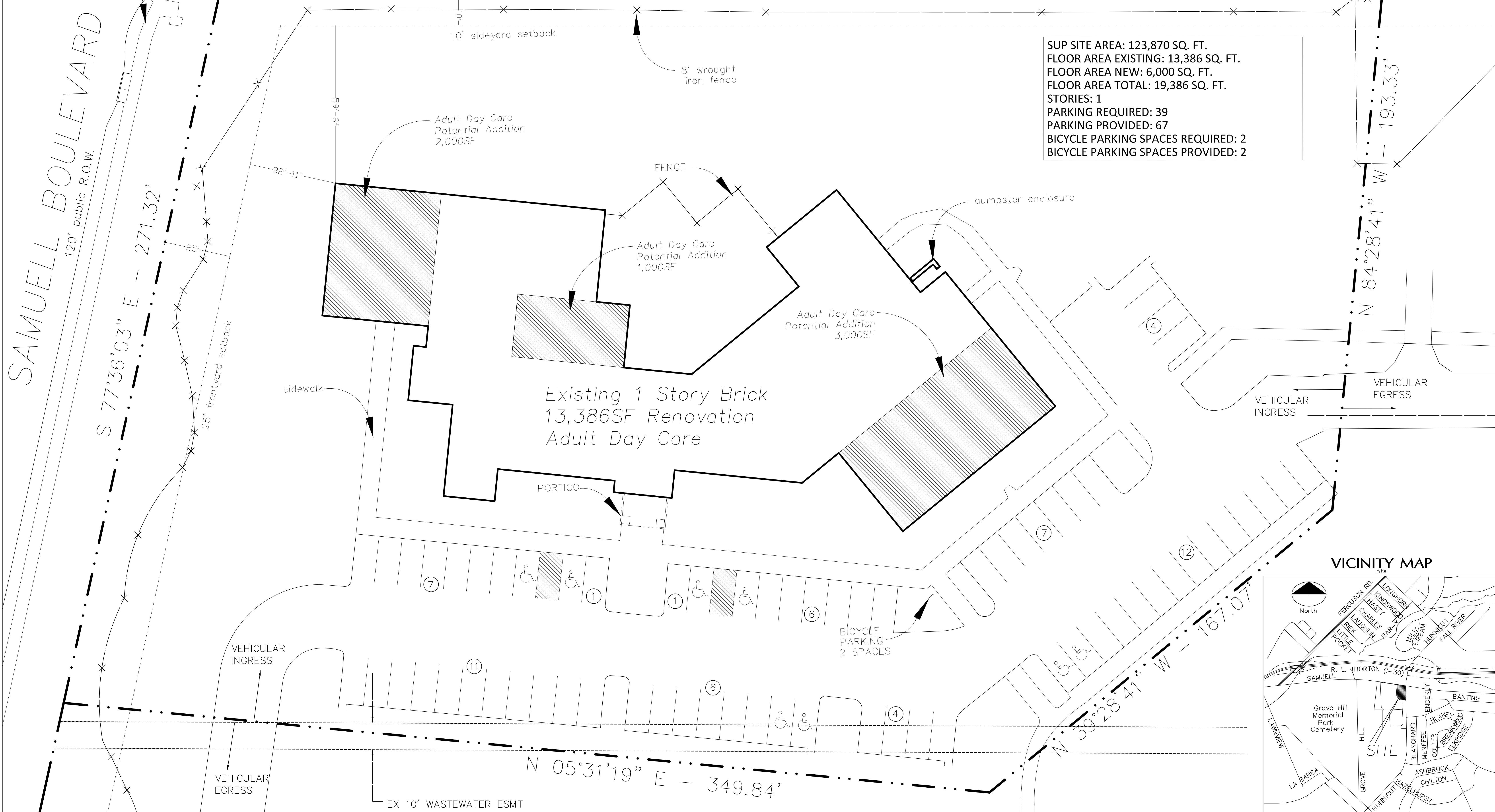
60' public R.O.W.

SOUTH - 437.52'

10' inlet

concrete sidewalk  
**SAMUELL BOULEVARD**  
 120' public R.O.W.  
 S 77°36'03" E - 271.32'

SUP SITE AREA: 123,870 SQ. FT.  
 FLOOR AREA EXISTING: 13,386 SQ. FT.  
 FLOOR AREA NEW: 6,000 SQ. FT.  
 FLOOR AREA TOTAL: 19,386 SQ. FT.  
 STORIES: 1  
 PARKING REQUIRED: 39  
 PARKING PROVIDED: 67  
 BICYCLE PARKING SPACES REQUIRED: 2  
 BICYCLE PARKING SPACES PROVIDED: 2

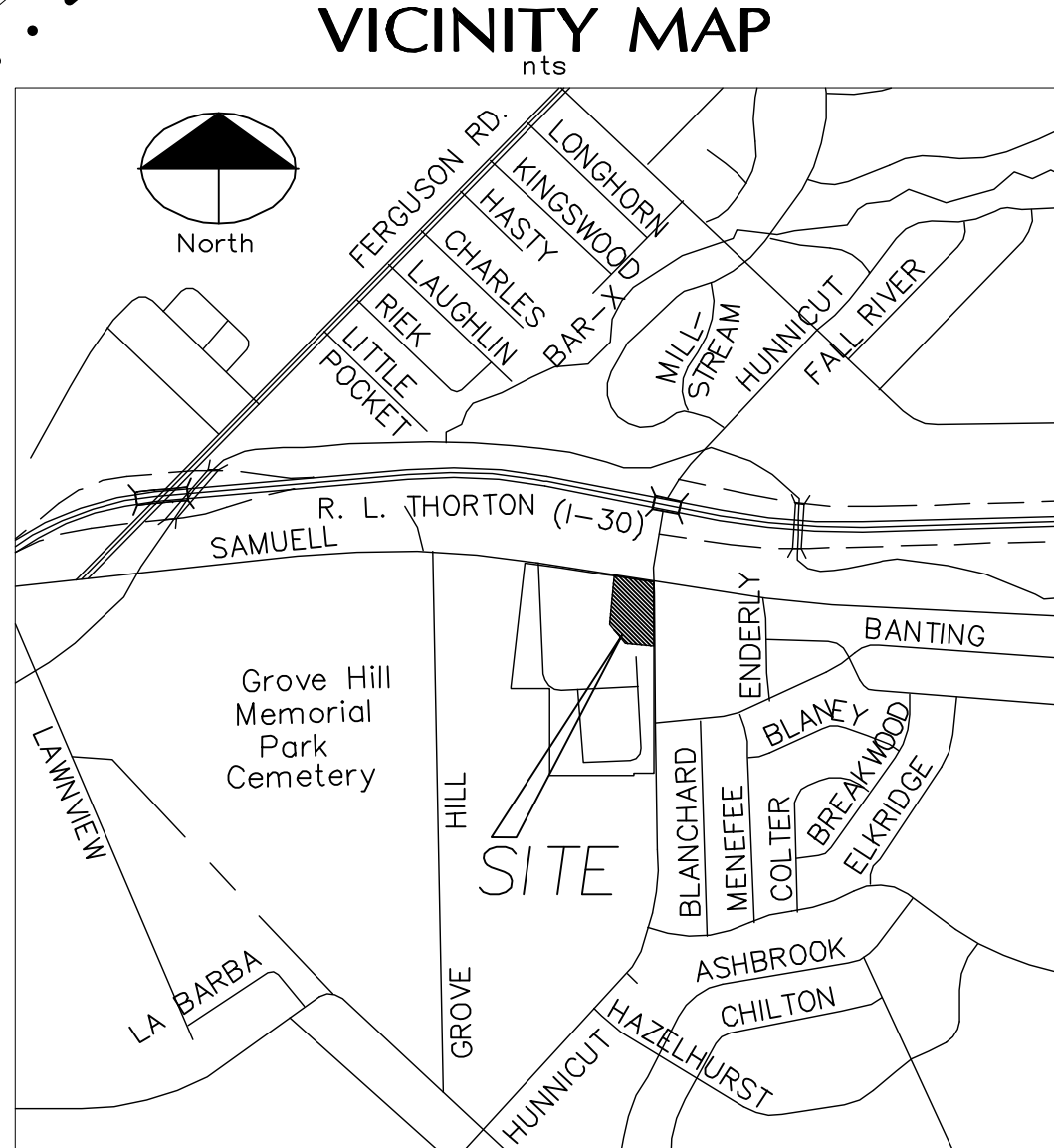


Adult Day Care  
 Potential Addition  
 2,000SF

Adult Day Care  
 Potential Addition  
 1,000SF

Adult Day Care  
 Potential Addition  
 3,000SF

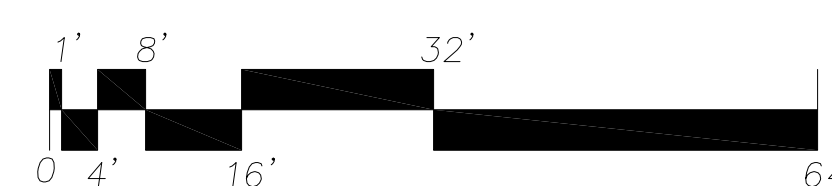
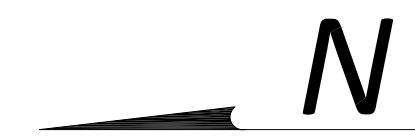
Existing 1 Story Brick  
 13,386SF Renovation  
 Adult Day Care



**SITE PLAN**  
 4830 Samuell Blvd.  
 Dallas, TX 75228

**LEGEND**

	FENCE		PROPOSED BUILDING ADDITION
	SUP BOUNDARY		NUMBER OF PARKING SPACES IN ROW
	BUILDING FOOTPRINT		
	MINIMUM SETBACK		



2015-09-10